

CONFERENCE
ON
RESOURCE MOBILISATION AND
EXPENDITURE PLANNING

SOFTWARE DEVELOPMENT AND
USE OF THE MODEL

by

EJAZ RASHID

SPONSORED

by

CANADIAN INTERNATIONAL DEVELOPMENT AGENCY

and

GOVERNMENT OF THE PUNJAB

March 11-13, 1995
Avani Hotel, Lahore

GLOSSARY

- User*** The *User* is you, the person who receives the computer's services; generally someone without much technical knowledge who makes decisions based on reports and other results that computer produces.
- Application Software*** Any instructions or collection of related programs designed to be carried out by a computer to satisfy user's specific needs are *Application Software*. A group of programs written to perform a decision process such as analyzing Economy wide implications of any policy shock through this model.
- Operating System*** Set of Internal commands, instructions or program to allow computer to direct its own resources and operations; in micro-computer, it is called a disk operating system
- FoxPro*** This is a database management system on the microcomputer, which is a software tool designed to facilitate the creation and maintenance of an information database in order to produce reports.
- Quattro Pro*** One of the spreadsheet software programs on microcomputer, enabling the user to create, manipulate and analyze data (mathematically or graphically) and develop personalized reports.
- E Views*** *E Views* provides regression and forecasting tools on Windows environment.
(Econometric Views) Areas where *E Views* can be useful include Macroeconomic Modelling, forecasting and Simulations
- Windows Operating System*** Operating System Software that makes the computer easier through graphic interface, which is consistent from application to another. One can simultaneously run more than one application and transport data between applications.

Integrated Social Policy Macro-Economic Planning Mode

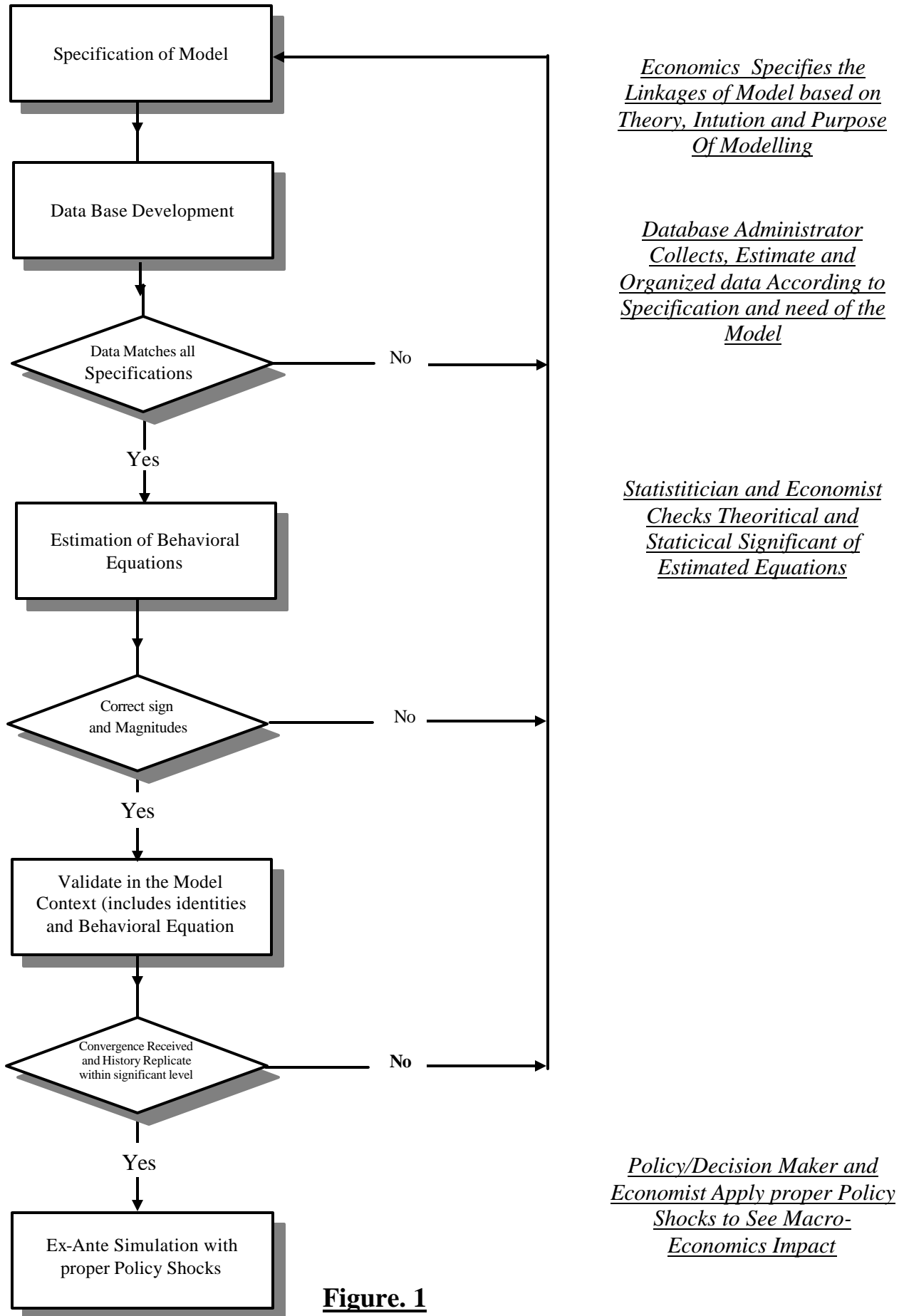


Figure. 1

Typical Software Process Diagram

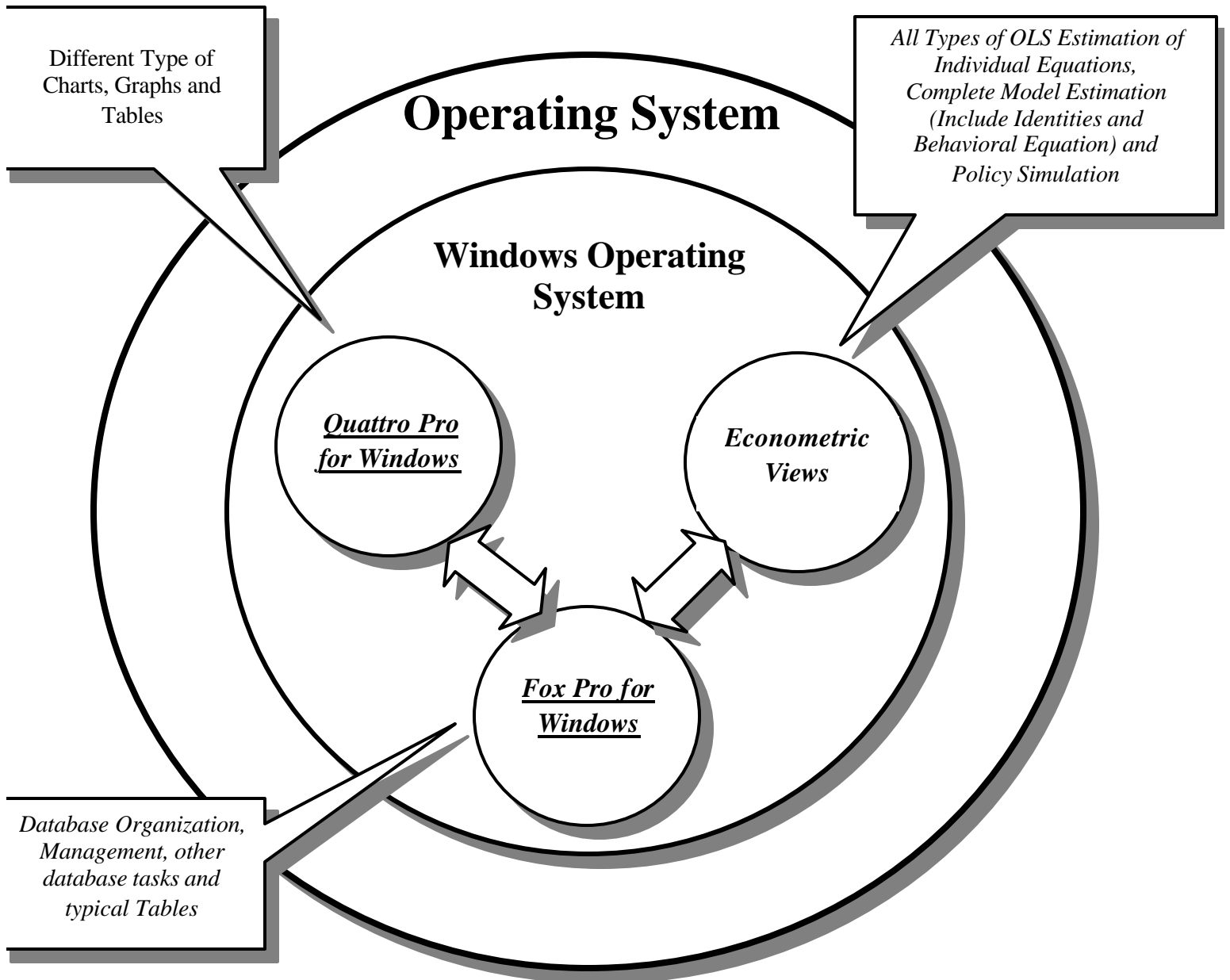
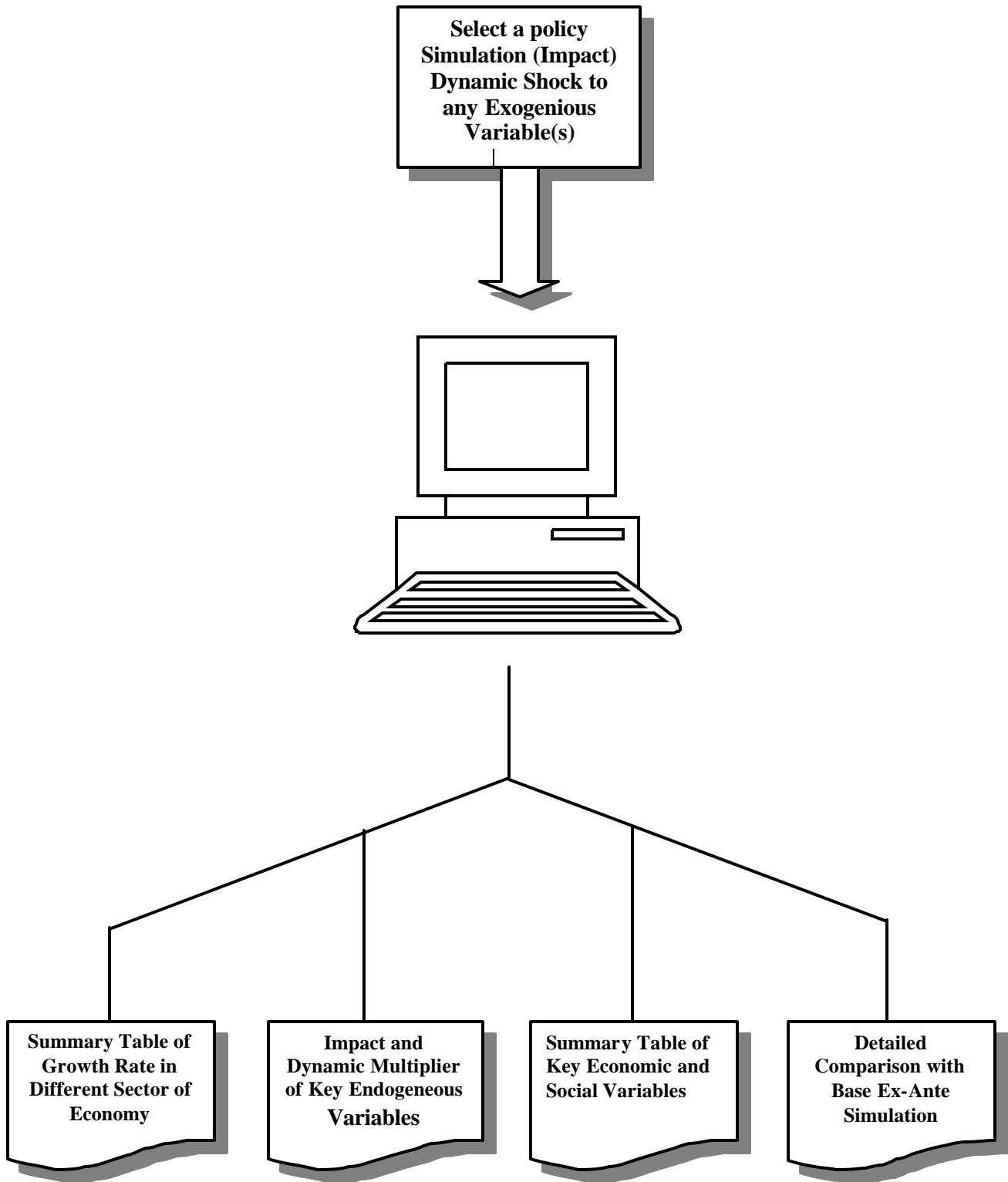


Figure 2



User and Computer Interface in ISSP Model

Figure. 3

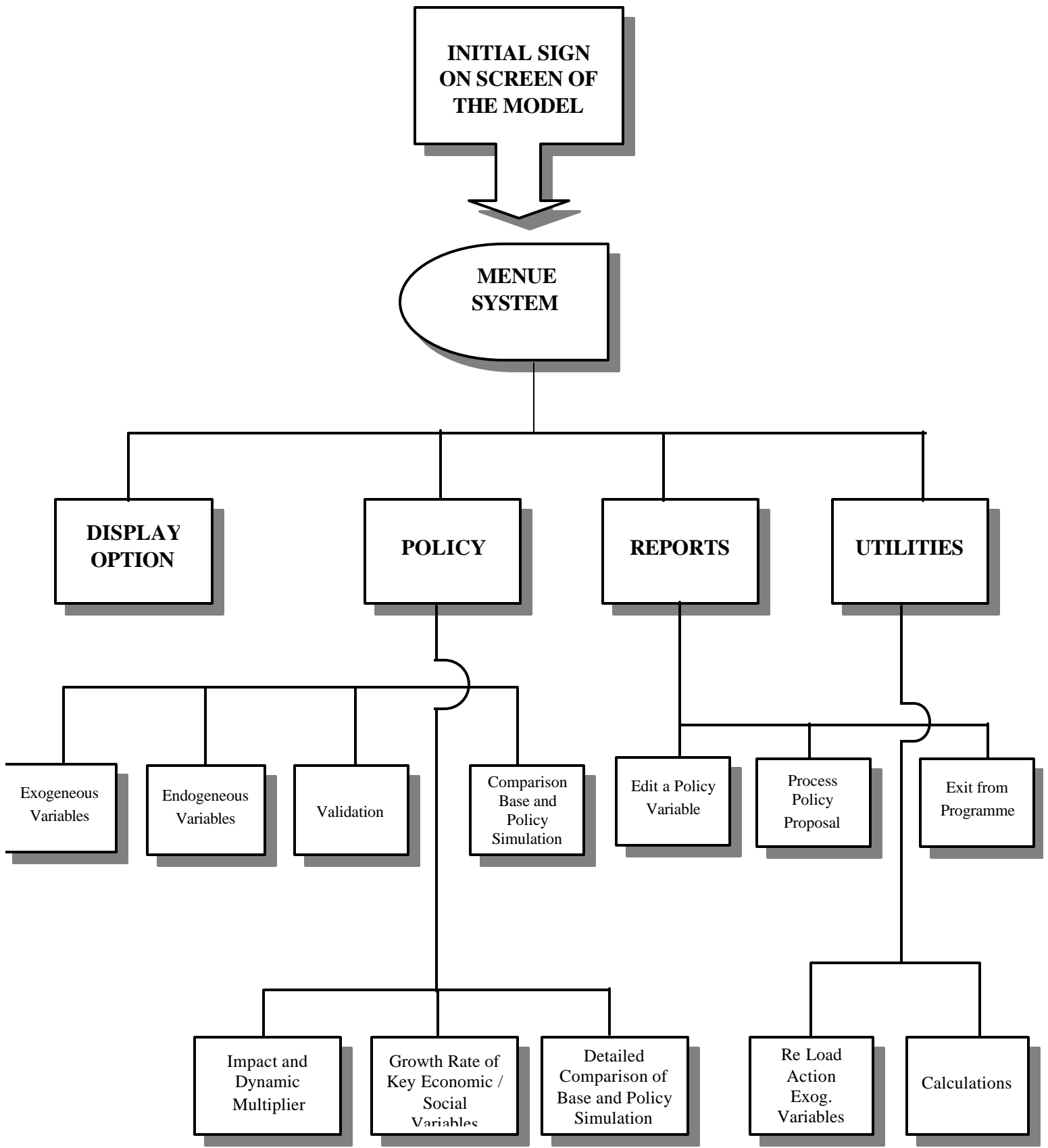


Figure. 4